



NATIONAL POWER CORPORATION

SUPPLEMENTAL /BID BULLETIN NO. 1 to the Bid Documents for the:

**LEASE OF 1.0 MW MODULAR DIESEL GENSETS FOR SIBUYAN DPP UNDER
PR NO. S1-SID24-001/REF NO. PB240321-JD00109**

11 MARCH 2024

All prospective bidders and authorized copyholders of the Bid Documents of the above-mentioned project are hereby informed of the following changes:

A. ADDITIONAL INFORMATION

GEOGRAPHIC COORDINATES - 12°18'15.48" N, 122°35'50.28" E
LOAD PROFILE (SEE ATTACHED - 5 pages "ANNEX A")
SITE DEVELOPMENT PLAN (SEE ATTACHED - 1 page "ANNEX B")
SINGLE LINE DIAGRAM (SEE ATTACHED - 1 page "ANNEX C")

B. SECTION VI – PART I – TECHNICAL SPECIFICATIONS

FROM	TO
TS.2.1 – By the Lessor	
18. Prepare and submit applications and pay all relative costs/fees for securing the following permits/certificates and provide NPC copy of the same: 18a. Certificate of Compliance (COC) from ERC; and 18b. Permit to Operate (PTO) from DENR-EMB	18. Prepare and submit applications and pay all relative costs/fees for securing the following permits/certificates and provide NPC copy of the same: 18a. Certificate of Compliance (COC) from ERC; and 18b. Permit to Operate (PTO) from DENR-EMB Note: All required documents/data/information necessary for the application of ECC & COE shall be submitted to NPC upon receipt of the NTP.



NATIONAL POWER CORPORATION

Gabriel Y. Itchon Building
Senator Miriam P. Defensor-Santiago Avenue (formerly BIR Road)
corner Quezon Avenue, Diliman, Quezon City 1100, Philippines
Tel. Nos. (632) 8921-3541 to 80 • Fax No. (632) 8921-2468
Website: www.napocor.gov.ph



C. SECTION VI – PART I – TECHNICAL SPECIFICATIONS

FROM	TO
TS.2.1 – By the Lessor	
19b. Certificate of Endorsement (COE) from DENR-EMB.	19b. Certificate of Endorsement (COE) from DOE.

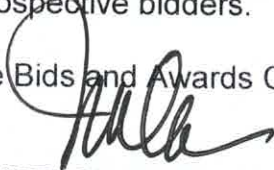
D. SECTION VI – PART I – TECHNICAL SPECIFICATIONS

FROM	TO
TS.2.2 – By the Lessee	
4. Prepare and submit applications for securing the required Environmental Compliance Certificate (ECC) and Permit to Operate (PTO) from DENR-EMB as project proponent, and designate a DENR accredited PCO provided all relatives costs shall be for the account of the Lessor.	4. Prepare and submit applications for securing the required Environmental Compliance Certificate (ECC) and Certificate of Endorsement (COE) from DOE as project proponent, and designate a DENR accredited PCO provided all relatives costs shall be for the account of the Lessor.

All other terms and conditions shall remain the same.

For the information and guidance of all authorized copyholders of the Bid Documents and prospective bidders.

For the Bids and Awards Committee:



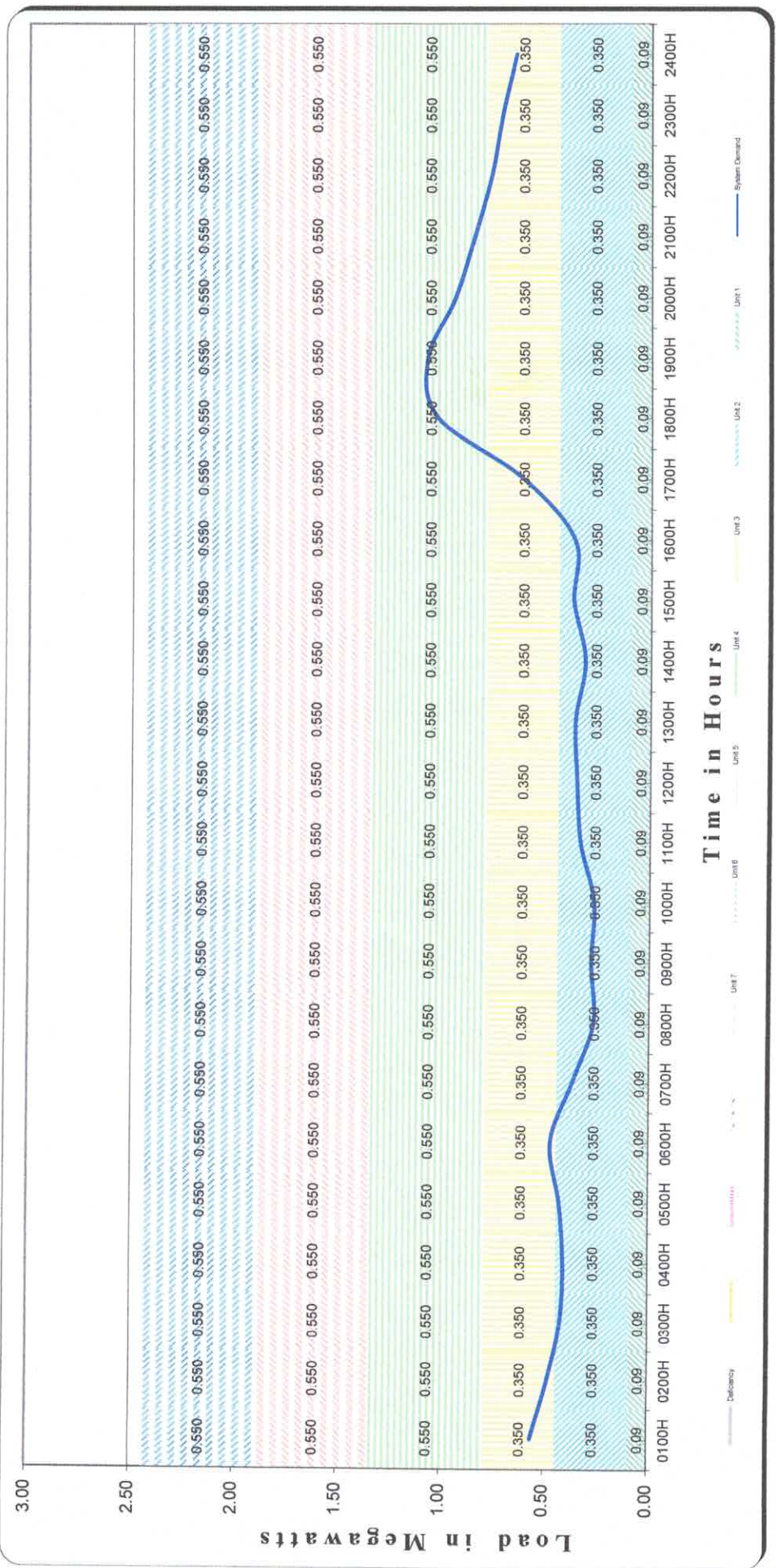
ATTY. MELCHOR P. RIDULME
 Vice President, Office of the Legal Counsel
 and Chairman, Bids and Awards Committee

SMALL POWER UTILITIES GROUP

LOAD AND DEMAND CURVE
SPUG MROD/SIBUYAN DPP

December 2023

Revised November 2001



Time in Hours	0100H	0200H	0300H	0400H	0500H	0600H	0700H	0800H	0900H	1000H	1100H	1200H	1300H	1400H	1500H	1600H	1700H	1800H	1900H	2000H	2100H	2200H	2300H	2400H	
TOTAL CAPABILITY	2.440	2.440	2.440	2.440	2.440	2.440	2.440	2.440	2.440	2.440	2.440	2.440	2.440	2.440	2.440	2.440	2.440	2.440	2.440	2.440	2.440	2.440	2.440	2.440	2.440
SYSTEM DEMAND	0.560	0.480	0.420	0.406	0.427	0.471	0.368	0.267	0.280	0.267	0.335	0.352	0.362	0.316	0.372	0.368	0.615	1.029	1.080	0.947	0.854	0.772	0.720	0.653	0.653
RESERVED / (DEFICIENCY)	1.880	1.960	2.020	2.034	2.013	1.969	2.072	2.173	2.160	2.173	2.105	2.088	2.078	2.124	2.068	2.072	1.825	1.411	1.360	1.493	1.586	1.668	1.720	1.787	1.787

Revised November 2001

National Power Corporation
OPERATIONS DEPARTMENT

TYPICAL DAILY LOAD CURVE
 (INFORMATION & DATA)

(IN MW)

Note:
 Fill up the info. & data box only. These graph & data sheet format are write protected. Inputted data will reflect automatically on the graph.
To Print Graph:
 Go to graph sheet then print.

Plant / Area SPUG MROD/SIBUYAN DPP
 For the Month of December 2023
 No. of Unit/s 7

	0100H	0200H	0300H	0400H	0500H	0600H	0700H	0800H	0900H	1000H	1100H	1200H	1300H	1400H	1500H	1600H	1700H	1800H	1900H	2000H	2100H	2200H	2300H	2400H		
Unit 1	0.090	0.090	0.090	0.090	0.090	0.090	0.090	0.090	0.090	0.090	0.090	0.090	0.090	0.090	0.090	0.090	0.090	0.090	0.090	0.090	0.090	0.090	0.090	0.090	0.090	
Unit 2	0.350	0.350	0.350	0.350	0.350	0.350	0.350	0.350	0.350	0.350	0.350	0.350	0.350	0.350	0.350	0.350	0.350	0.350	0.350	0.350	0.350	0.350	0.350	0.350	0.350	0.350
Unit 3	0.350	0.350	0.350	0.350	0.350	0.350	0.350	0.350	0.350	0.350	0.350	0.350	0.350	0.350	0.350	0.350	0.350	0.350	0.350	0.350	0.350	0.350	0.350	0.350	0.350	0.350
Unit 4	0.550	0.550	0.550	0.550	0.550	0.550	0.550	0.550	0.550	0.550	0.550	0.550	0.550	0.550	0.550	0.550	0.550	0.550	0.550	0.550	0.550	0.550	0.550	0.550	0.550	0.550
Unit 5	0.550	0.550	0.550	0.550	0.550	0.550	0.550	0.550	0.550	0.550	0.550	0.550	0.550	0.550	0.550	0.550	0.550	0.550	0.550	0.550	0.550	0.550	0.550	0.550	0.550	0.550
Unit 6	0.550	0.550	0.550	0.550	0.550	0.550	0.550	0.550	0.550	0.550	0.550	0.550	0.550	0.550	0.550	0.550	0.550	0.550	0.550	0.550	0.550	0.550	0.550	0.550	0.550	0.550
Unit 7																										
Reserve/(Deficiency)	1.880	1.960	2.020	2.034	2.013	1.969	2.072	2.173	2.160	2.173	2.160	2.105	2.088	2.078	2.124	2.068	2.072	1.825	1.411	1.360	1.493	1.586	1.668	1.720	1.787	
System Demand	0.560	0.480	0.420	0.406	0.427	0.471	0.368	0.267	0.280	0.267	0.335	0.352	0.362	0.316	0.372	0.368	0.615	1.029	1.080	0.947	0.854	0.772	0.720	0.653	0.653	
Dep. Capability	2.440	2.440	2.440	2.440	2.440	2.440	2.440	2.440	2.440	2.440	2.440	2.440	2.440	2.440	2.440	2.440	2.440	2.440	2.440	2.440	2.440	2.440	2.440	2.440	2.440	2.440

National Power Corporation
OPERATIONS DEPARTMENT

TYPICAL DAILY LOAD CURVE

(INFORMATION & DATA)

Note: Fill up the info. & data box only. These graph & data sheet format are write protected. Inputted data will reflect automatically on the graph.
 To Print Graph: Go to graph sheet then print.

Grid / Area SIBUYAN ISLAND
 For the Month of December 2023

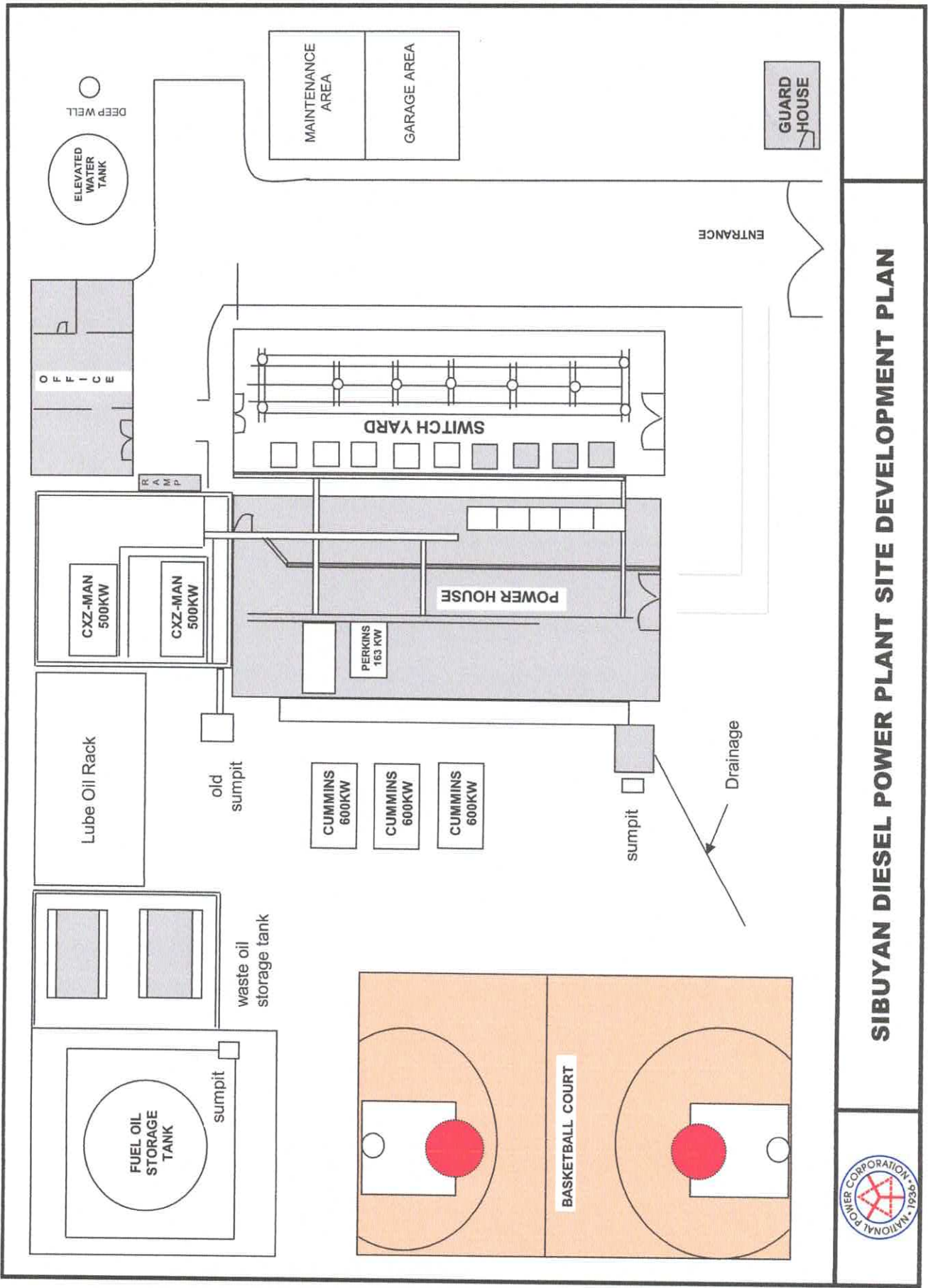
Revised November 2001

Land-Based/ Power Barges	HOURS																							
	0100H	0200H	0300H	0400H	0500H	0600H	0700H	0800H	0900H	1000H	1100H	1200H	1300H	1400H	1500H	1600H	1700H	1800H	1900H	2000H	2100H	2200H	2300H	2400H
Cantingas Mini Hydro	1.362	1.364	1.331	1.316	1.297	1.295	1.306	1.324	1.354	1.365	1.371	1.372	1.371	1.365	1.369	1.370	1.371	1.368	1.368	1.369	1.367	1.370	1.363	1.360
Sibuyan DPP	0.560	0.480	0.420	0.406	0.427	0.471	0.368	0.267	0.280	0.267	0.335	0.352	0.362	0.316	0.372	0.368	0.615	1.029	1.080	0.947	0.854	0.772	0.720	0.653
Reserve/(Deficiency)	0.000	0.000	0.000	0.000	0.000	0.000	0.000	0.000	0.000	0.000	0.000	0.000	0.000	0.000	0.000	0.000	0.000	0.000	0.000	0.000	0.000	0.000	0.000	0.000
System Demand	1.922	1.844	1.751	1.722	1.724	1.766	1.674	1.591	1.634	1.632	1.706	1.724	1.733	1.681	1.741	1.738	1.986	2.397	2.449	2.316	2.221	2.142	2.083	2.013
Dep. Capability	1.922	1.844	1.751	1.722	1.724	1.766	1.674	1.591	1.634	1.632	1.706	1.724	1.733	1.681	1.741	1.738	1.986	2.397	2.449	2.316	2.221	2.142	2.083	2.013

**Data Needed for Load Curve:
Sibuyan DPP**

Unit No.	Actual Capability		December 2023			
	System Demand (max)		Hour	Cantingas	Sibuyan	Grid
1	0.000		0100	1.362	0.560	1.9220
2	0.000		0200	1.364	0.480	1.8440
3	0.000		0300	1.331	0.420	1.7510
4	0.000		0400	1.316	0.406	1.7220
7	0.090		0500	1.297	0.427	1.7240
8	0.350		0600	1.295	0.471	1.7660
9	0.350		0700	1.306	0.368	1.6740
10	0.550		0800	1.324	0.267	1.5910
11	0.550		0900	1.354	0.280	1.6340
			1000	1.365	0.267	1.6320
			1100	1.371	0.335	1.7060
			1200	1.372	0.352	1.7240
			1300	1.371	0.362	1.7330
			1400	1.365	0.316	1.6810
			1500	1.369	0.372	1.7410
			1600	1.370	0.368	1.7380
			1700	1.371	0.615	1.9860
			1800	1.368	1.029	2.3970
			1900	1.369	1.080	2.4489
			2000	1.369	0.947	2.3160
			2100	1.367	0.854	2.2210
			2200	1.370	0.772	2.1420
			2300	1.363	0.720	2.0830
			2400	1.360	0.653	2.0130
	2.440					

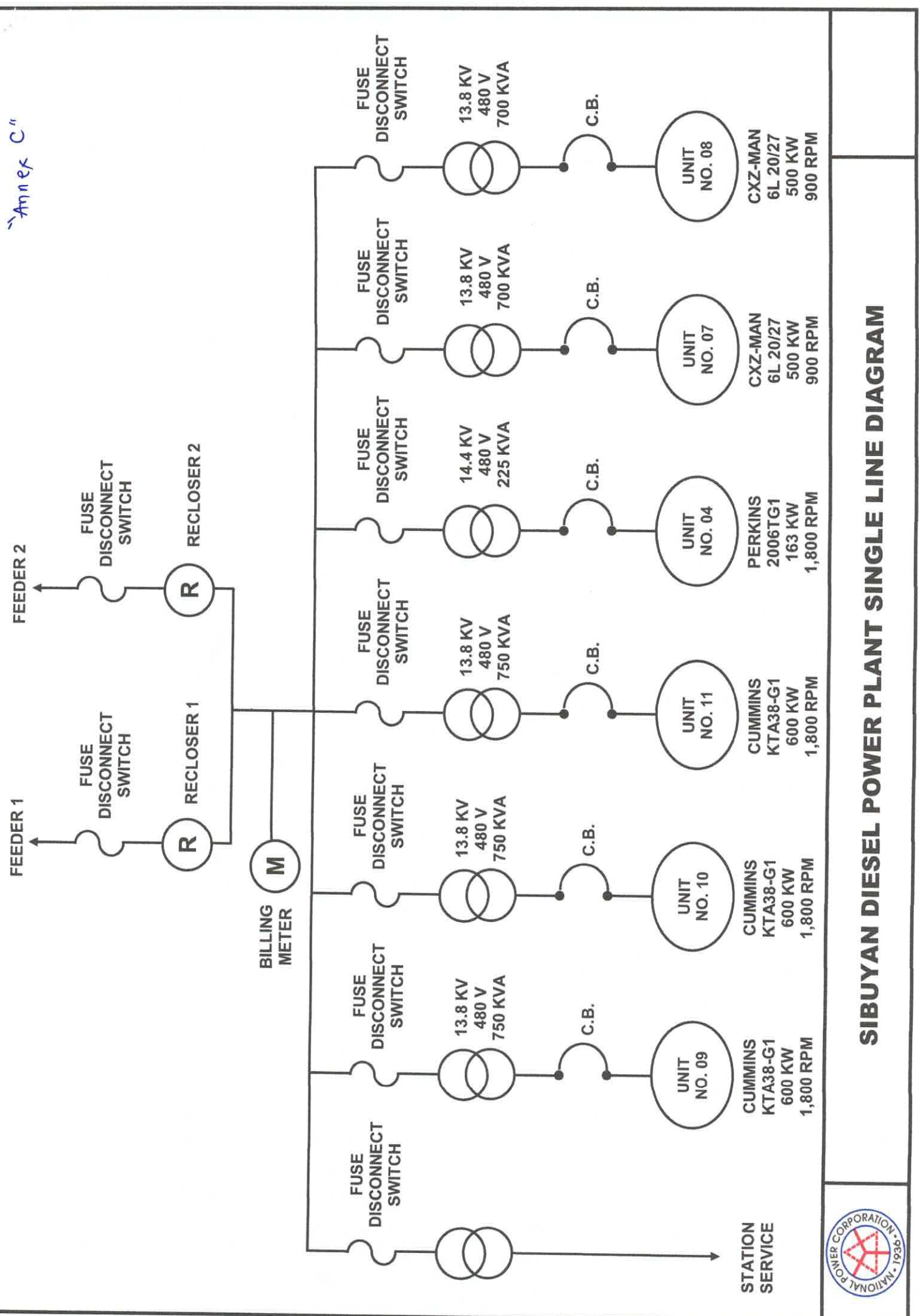
"Annex B"



SIBUYAN DIESEL POWER PLANT SITE DEVELOPMENT PLAN



Annex C



SIBUYAN DIESEL POWER PLANT SINGLE LINE DIAGRAM

